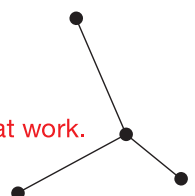




Integrated Centralized Control Web



Contents

1.	Login process	02
2.	Description of the web interface	03
2.1	Group display	03
2.2	Floor plan display	04
2.3	Selecting group icons	05
2.3.1	Selecting unit group(s)	05
2.3.2	Selecting all unit groups on the selected storey	05
2.3.3	Selecting all groups	06
2.3.4	Selecting all groups of a specific centralised controller	06
2.3.5	Selecting all groups in a specific block/energy management block	07
2.3.6	Selecting all groups in entire building	07
3.	Selecting unit types	08
3.1	With consistent unit types	08
3.2	With different unit types	08
4.	Operating the units	09
4.1	Basic functions	09
4.2	Schedule settings	10
4.2.1	Specifying a schedule for a group	10
4.2.2	Defining the date range for the schedule	11
4.2.3	Selecting a day of the week	12
4.2.4	Creating or changing the schedule contents	12
4.2.5	Saving schedules	14
4.2.6	Copying existing settings to a different group	15
4.2.7	Creating a schedule on the basis of existing settings for a different day of the week	16
4.2.8	Using schedule templates	17
4.2.9	Assigning schedule templates to specific days	18
5.	Personal Web	19
6.	Settings	22
7.	Error handling	23
8.	Web browser navigation overview	26

1. Login process

1. Enter the following address in the address bar of your web browser:
http://[IP address of AE-200/EW-50]/control/index.html
2. You will be taken to a login screen.



Example:

If the IP address of the AE-200/EW-50 is **192.168.1.1**, you must enter the following URL:
[http://192.168.1.1/control/index.html].

Note:

The standard IP address of the AE-200/EW-50 is **192.168.1.1**.

The recommended IP address range of the AE-200/EW-50 is between **192.168.1.1** and **192.168.1.40**.

The website will then be displayed in the language of the PC operating system. If a different language is required, please select one of the following addresses:

Chinese	http://[IP address of AE-200/EW-50]/control/index.html?zh
English	http://[IP address of AE-200/EW-50]/control/index.html?en
French	http://[IP address of AE-200/EW-50]/control/index.html?fr
German	http://[IP address of AE-200/EW-50]/control/index.html?de
Italian	http://[IP address of AE-200/EW-50]/control/index.html?it
Japanese	http://[IP address of AE-200/EW-50]/control/index.html?ja
Portuguese	http://[IP address of AE-200/EW-50]/control/index.html?pt
Russian	http://[IP address of AE-200/EW-50]/control/index.html?ru
Spanish	http://[IP address of AE-200/EW-50]/control/index.html?es
Turkish	http://[IP address of AE-200/EW-50]/control/index.html?tr

Note:

For direct access in the future, you can add the website to your favourites on the login screen.

If the Integrated Centralized Control Web is in continuous operation, the PC must be restarted on a regular basis (approx. once a week).

3. Enter the user name and the password on the login screen and click [Login]. A screen showing the operating status of the air conditioning unit will then be displayed.

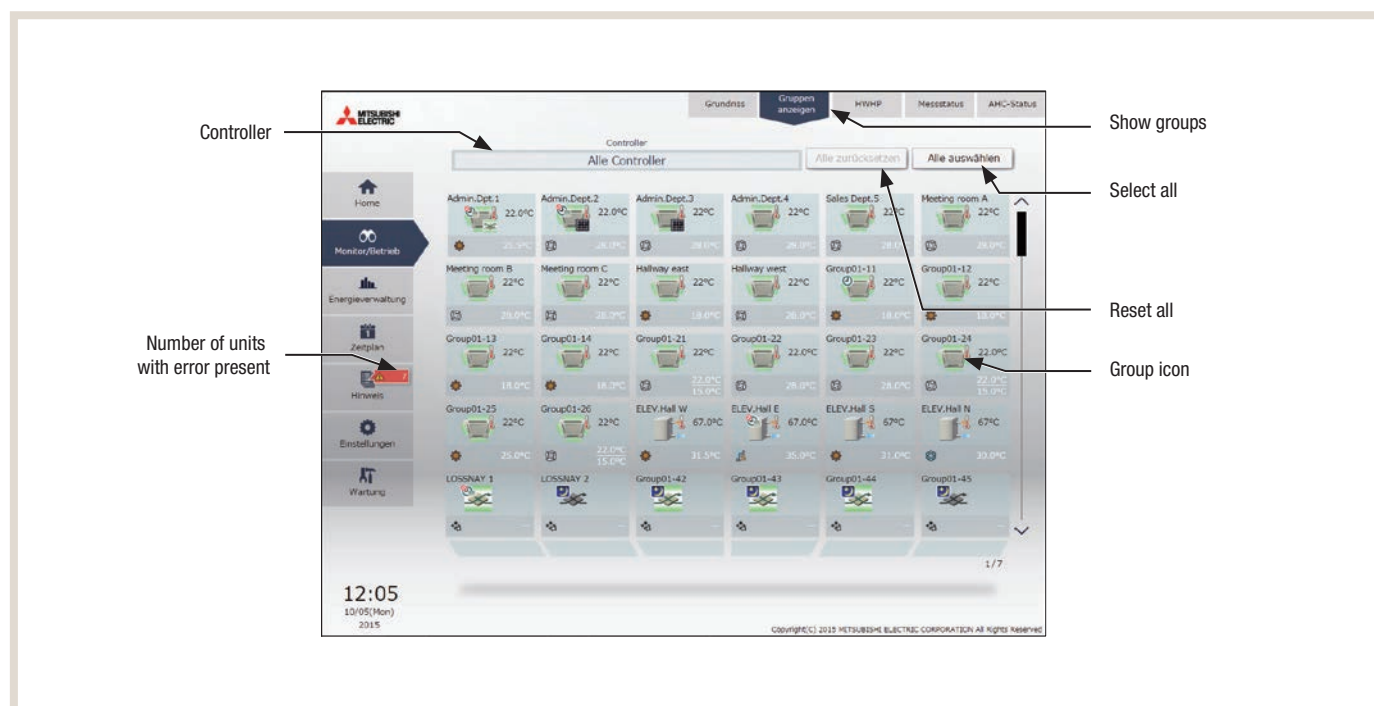
User	Terminal	Default user name	Default password
Head of building technology	PC	administrator	admin

The user name and password used for the Integrated Centralized Control Web are different to those used for the LCD. We recommend changing the default user name and password to ensure that no-one except the head of building technology can change the settings.

2. Description of the web interface

2.1 Group display

Click [Monitor/Operation] in the menu, then click [Show groups] to display the operating status of unit groups.



Menu item	Description
[Controller]	Click here to restrict the unit group display to [Centralised controllers], [Blocks] or [Energy management blocks].
[Number of units with error present]	Displays the number of units controlled by the AE-200/EW-50 that presently feature an error. Click [Info] > [Error list] to display the [Error list] screen.
[Select all]	Click here to select all displayed unit groups.
[Reset all]	Click here to discard the entire current selection.
[Group icon]	The type and status of the units within the group are displayed here.

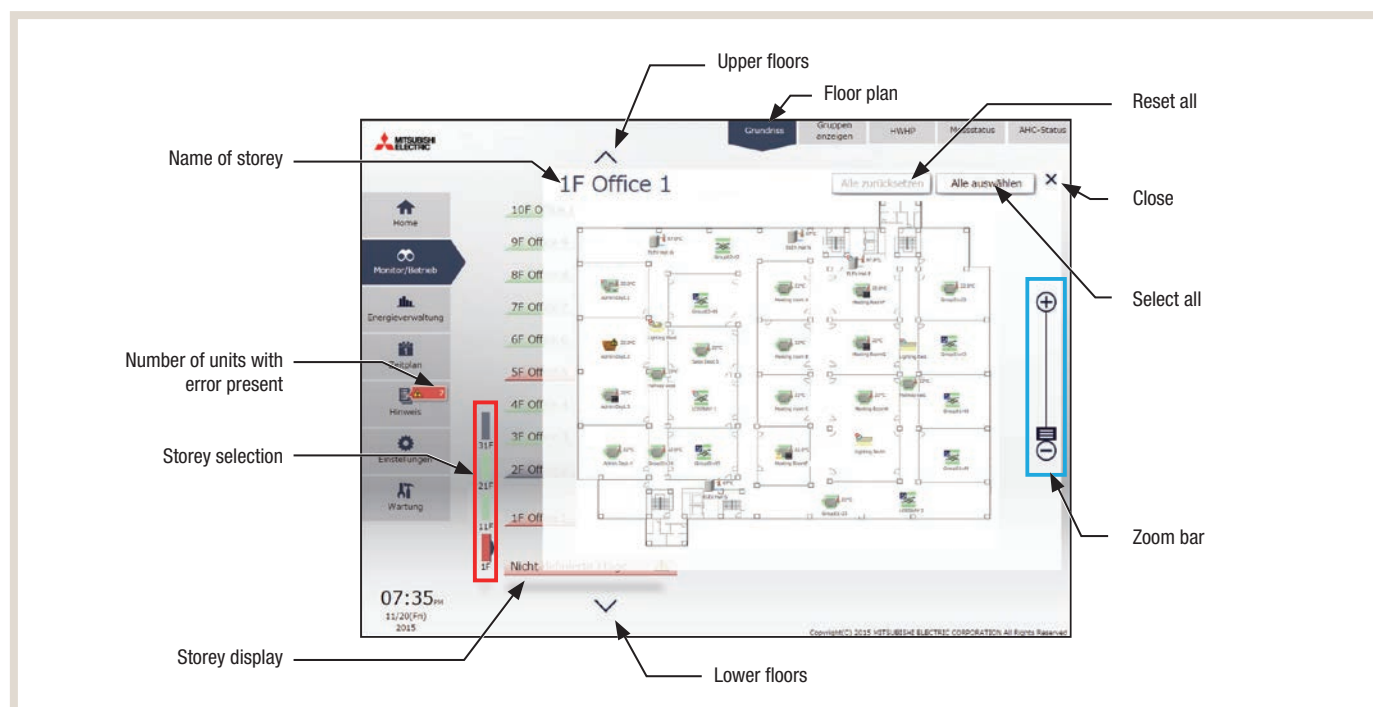
2.2 Floor plan display

Click [Monitor/Operation] in the menu, then click [Floor plan] or the [Storey display area] to display the operating status of unit groups. The floor plan to be shown can be selected by clicking the [Storey display area] and the [Storey display selection area] while in the floor plan display.

Note:

If you click the [Storey display area] on the Home screen, the menu will change to [Monitor/Operation] and the floor plan of the selected storey will be shown.

If no floor plan has been saved, then no floor plan will be shown.



Menu item	Description
[Storey selection]	<p>Changes the storeys shown in the storey display area in units of 10 storeys.</p> <p>Displays the status of the air conditioning units registered for the storeys.</p> <p>■ (Green): One or more units located on this storey are in operation.</p> <p>■ (Grey): All units located on this storey have stopped.</p> <p>■ (Red): Error on one or more units located on this storey.</p> <p>Note: The number of buttons for changing between the displayed storeys varies depending on the settings configured under [Storey settings] as part of the initial settings.</p>
[Storey display]	<p>Displays the operating status of the air conditioning units for 10 storeys.</p> <p>Displays the status of the air conditioning units registered for the storeys.</p> <p>■ (Green): One or more units located on this storey are in operation.</p> <p>■ (Grey): All units located on this storey have stopped.</p> <p>■ (Red): Error on one or more units located on this storey.</p>
[Number of units with error present]	<p>Displays the number of units controlled by the AE-200/EW-50 that presently feature an error.</p> <p>Click [Info] > [Error list] to display the [Error list] screen.</p>
[Name of storey]	The name of the displayed storey is shown here.
[Upper floors]	Click here to move to the upper floors.
[Lower floors]	Click here to move to the lower floors.
[Select all]	Click here to select all displayed unit groups.
[Reset all]	Click here to discard the entire current selection.
[Close]	Click here to close the floor plan screen.
[Zoom bar]	Click here to zoom in or out of the floor plan.

2.3 Selecting group icons

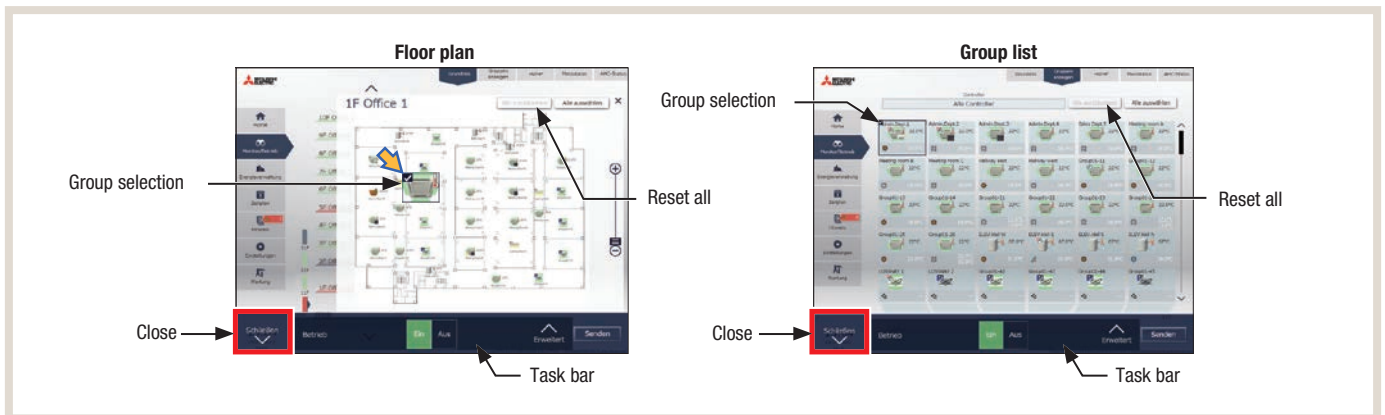
2.3.1 Selecting unit group(s)

On the floor plan screen or the group list screen, click the icons of the groups you wish to operate.

The selected group icons are marked with a tick and a dark blue frame.

Click again to discard the selection.

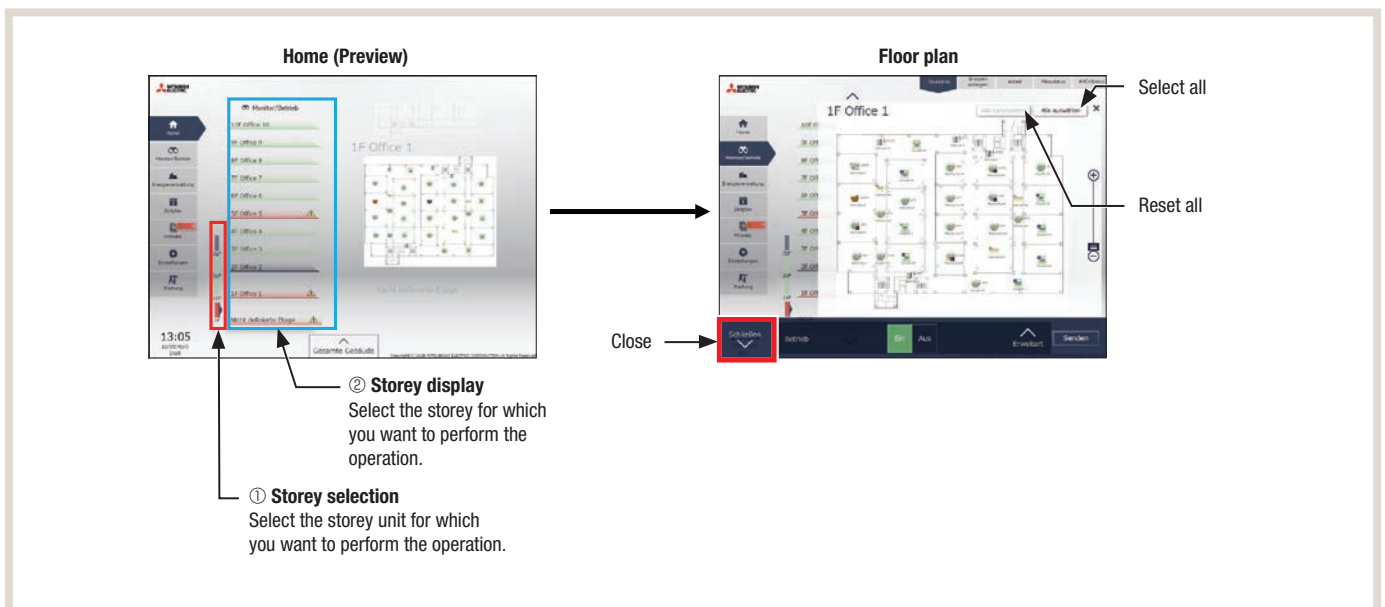
To discard the entire group selection, click [Reset all] or [Close] in the task bar.



2.3.2 Selecting all unit groups on the selected storey

First select the storey for which you wish to perform this operation. Do this by making your selection in the [Storey selection] and then in the [Storey display] on the [Home (Preview)] screen. Then click [Select all] on the [Floor plan] screen. All selected icons on the selected storey are marked with a tick and a dark blue frame.

To discard the entire group selection, click [Reset all] or [Close] in the task bar.

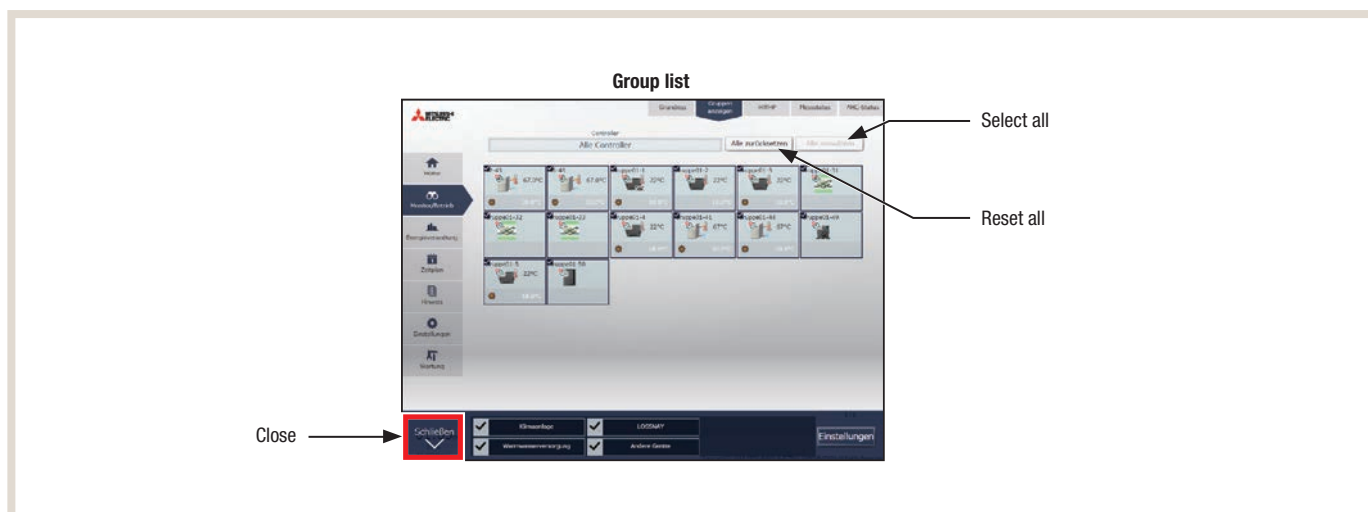


2.3.3 Selecting all groups

Click [Select all] in the group list.

All icons are marked with a tick and a dark blue frame.

To discard the entire group selection, click [Reset all] or [Close] in the task bar.



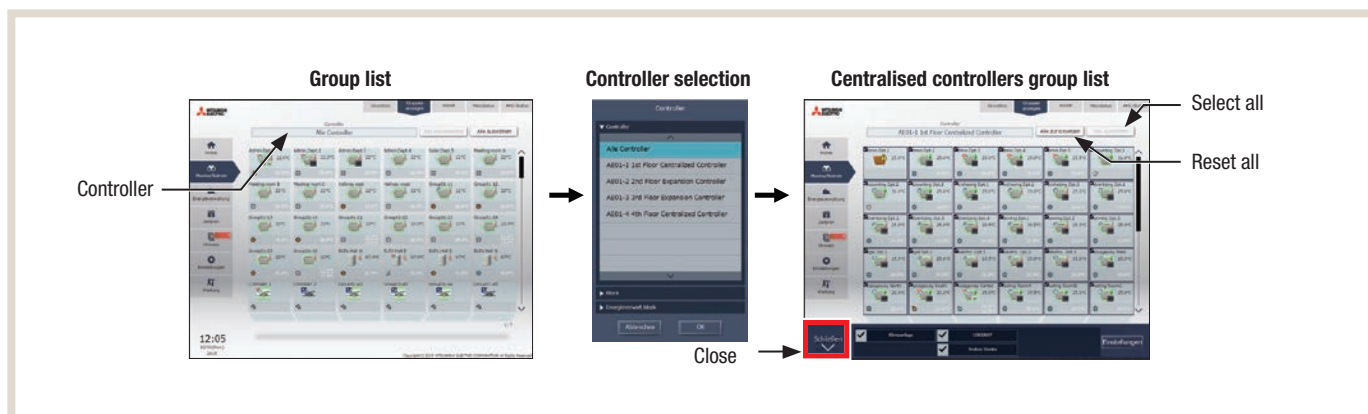
2.3.4 Selecting all groups of a specific centralised controller

Click [Controller] in the group list. Select a centralised controller on the controller selection screen.

The unit groups controlled by the selected centralised controller will be displayed.

Click [Select all] in the (centralised controllers) group list. All icons are marked with a tick and a dark blue frame.

To discard the entire group selection, click [Reset all] or [Close] in the task bar.

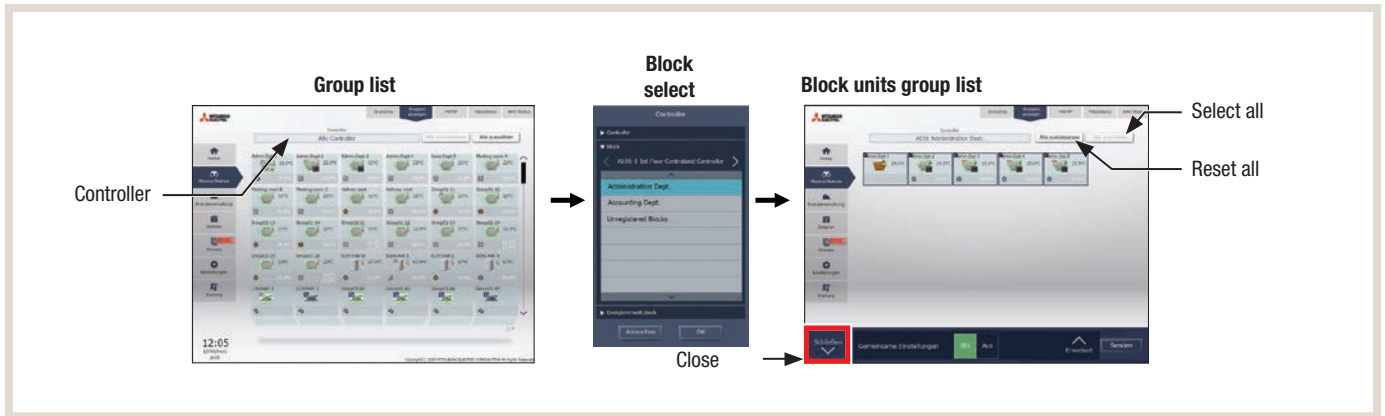


2.3.5 Selecting all groups in a specific block/energy management block

Click [Controller] in the group list. Select a block on the block selection screen. The unit groups within the selected block will be displayed.

Click [Select all] in the (block units) group list. All icons are marked with a tick and a dark blue frame.

To discard the entire group selection, click [Reset all] or [Close] in the task bar.



2.3.6 Selecting all groups in entire building

On the Home screen, click [Entire building].

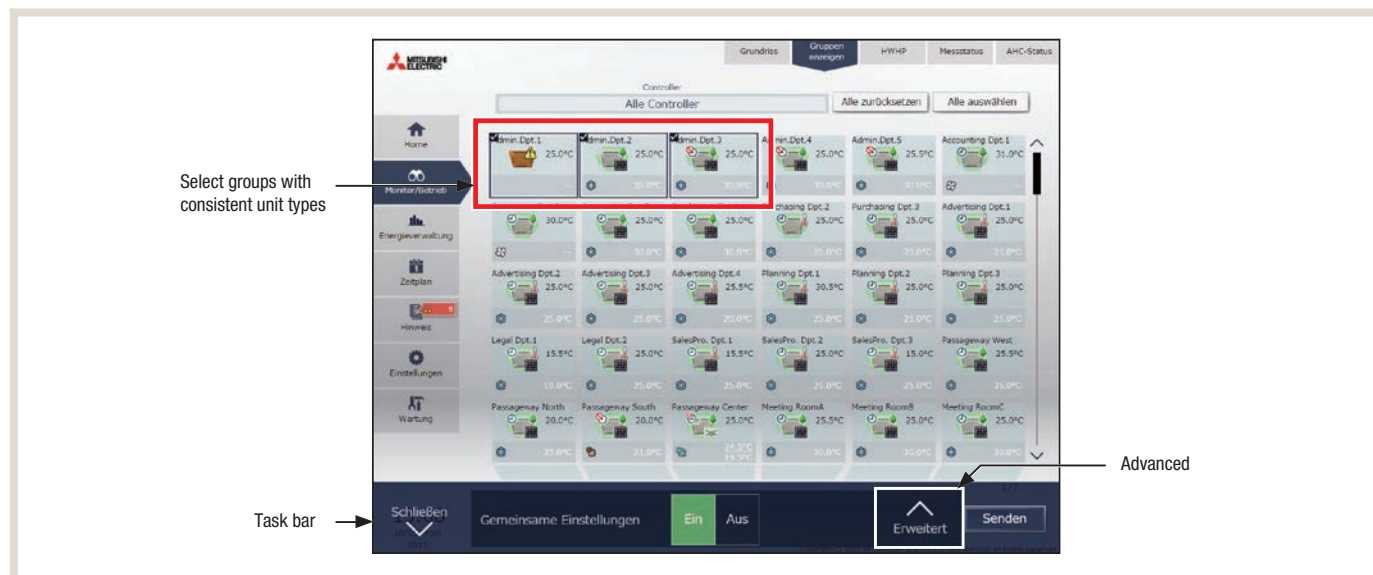
To discard the entire group selection, click [Close] in the task bar.



3. Selecting unit types

3.1 With consistent unit types

If you select the group icons to be operated and click [Advanced], the operating settings screen for the selected groups will be displayed.



Note: [On] and [Off] operations can be performed in the task bar for the selected unit groups.

3.2 With different unit types

If you select the group icons to be operated, the selection options for the unit type are called up in the task bar. Select a unit type and click [Settings] to display the [Operation settings] screen.

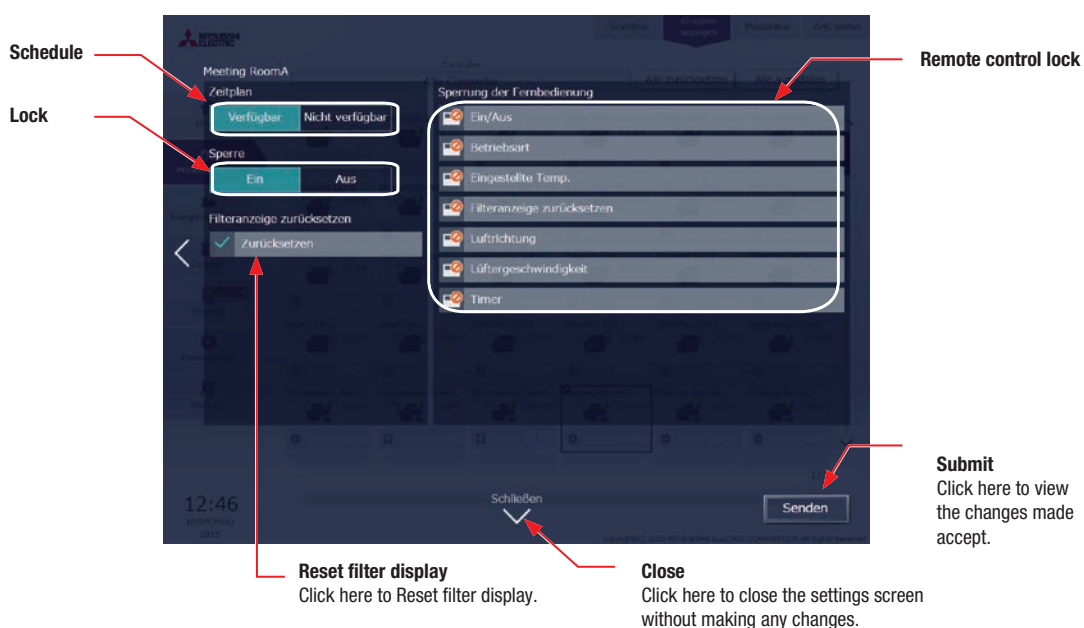
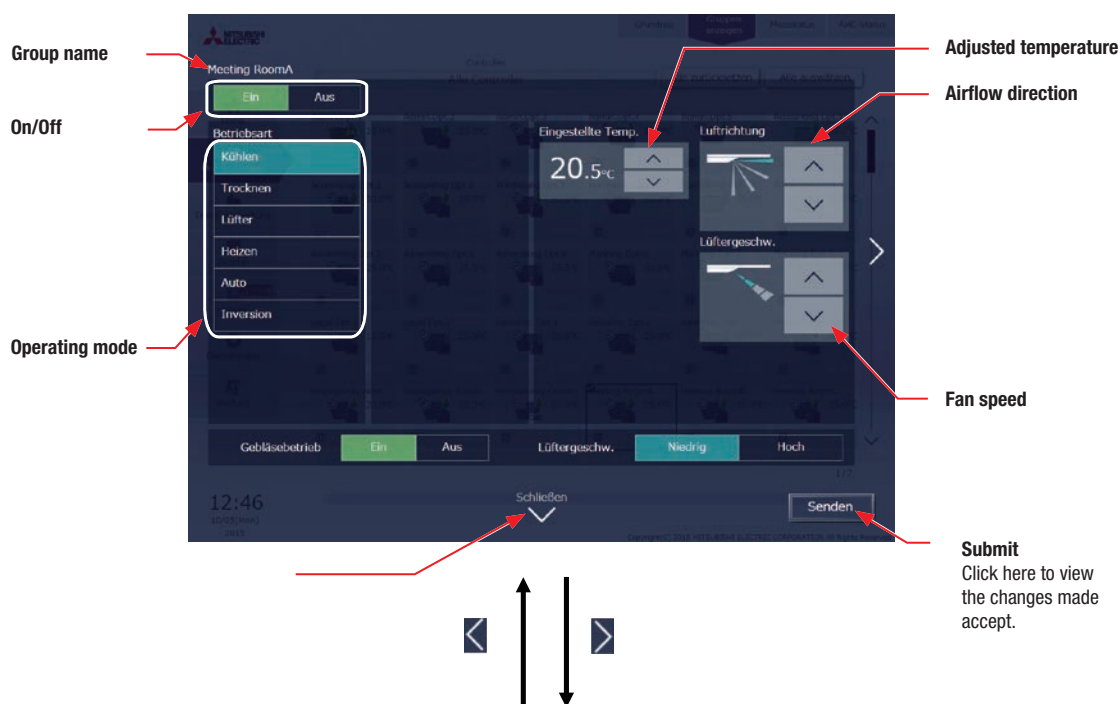


Note: If two or more unit types are selected, only the [On/Off] and [Schedule] settings can be configured. The [Other units] option in the task bar refers to external units.

4. Operating the units

4.1 Basic functions

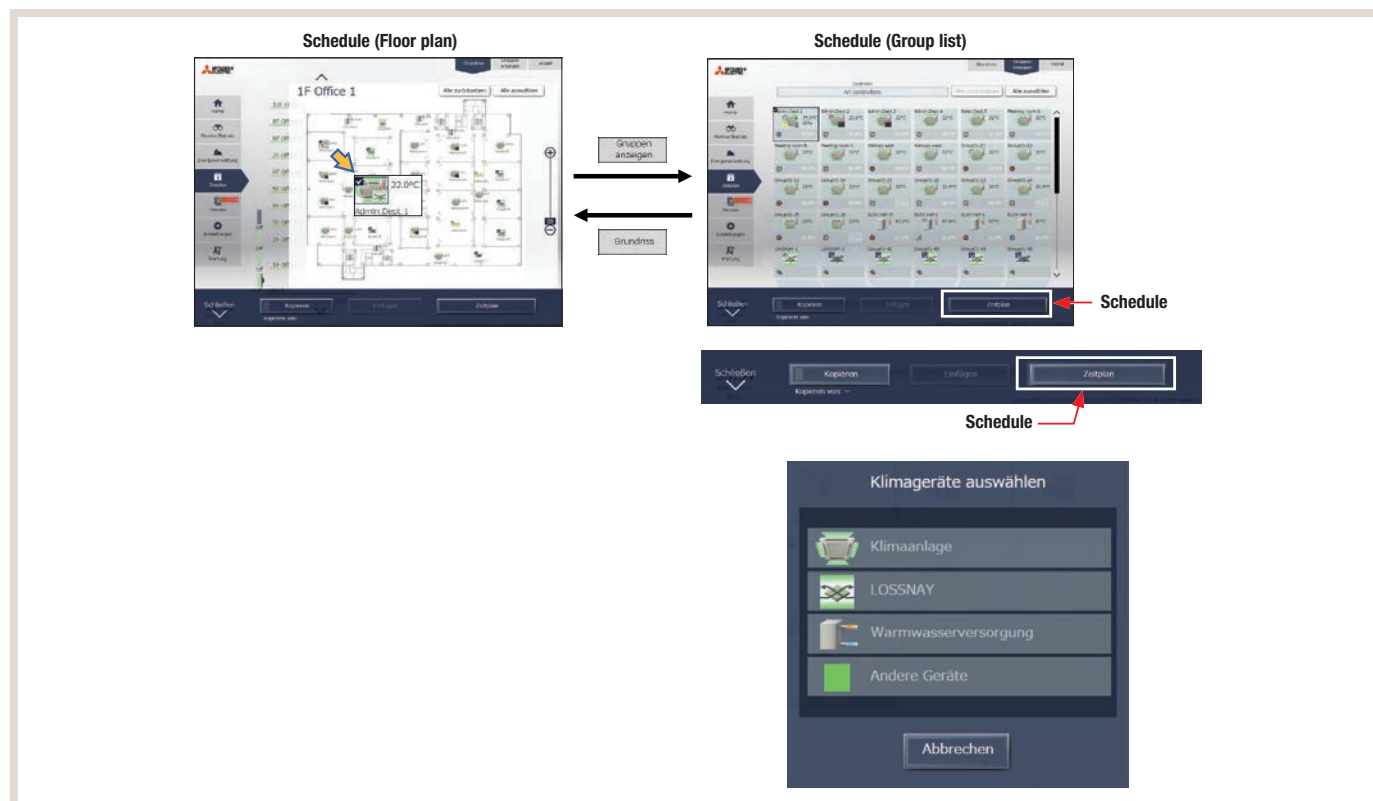
The images below provide an example of the operation of the units and depict possible settings for blocking individual functions of the units.



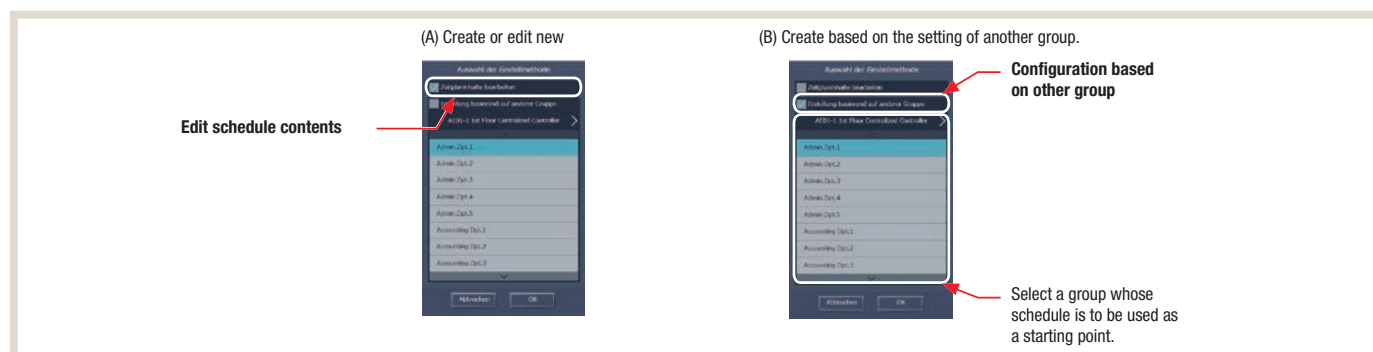
4.2 Schedule settings

4.2.1 Specifying a schedule for a group

On the [Floor plan] screen or in the group list, select one or more group icons to which the schedule should be applied and click [Schedule]. A screen that enables you to configure a schedule for the selected groups will then appear.



1. Select one or more group icons to which the schedule should be applied and click [Schedule] in the task bar.
2. If there are different unit types present, a screen for selecting the unit type will appear. Select a unit type in order to define the schedule.
3. Select a configuration method.
 - (A) To create a new schedule or edit an existing schedule, click [Edit schedule contents] and then click [OK].
 - (B) To create a schedule based on the settings of a different group, select [Configuration based on other group], select the group that is to be used as the initial basis and click [OK]. The contents of the schedule defined for the selected group will be displayed on the screen that subsequently appears.



Note: If the group whose schedule is to be used as the initial basis does not have any schedule settings, the screen that subsequently appears will not contain any schedule contents.

4.2.2 Defining the date range for the schedule

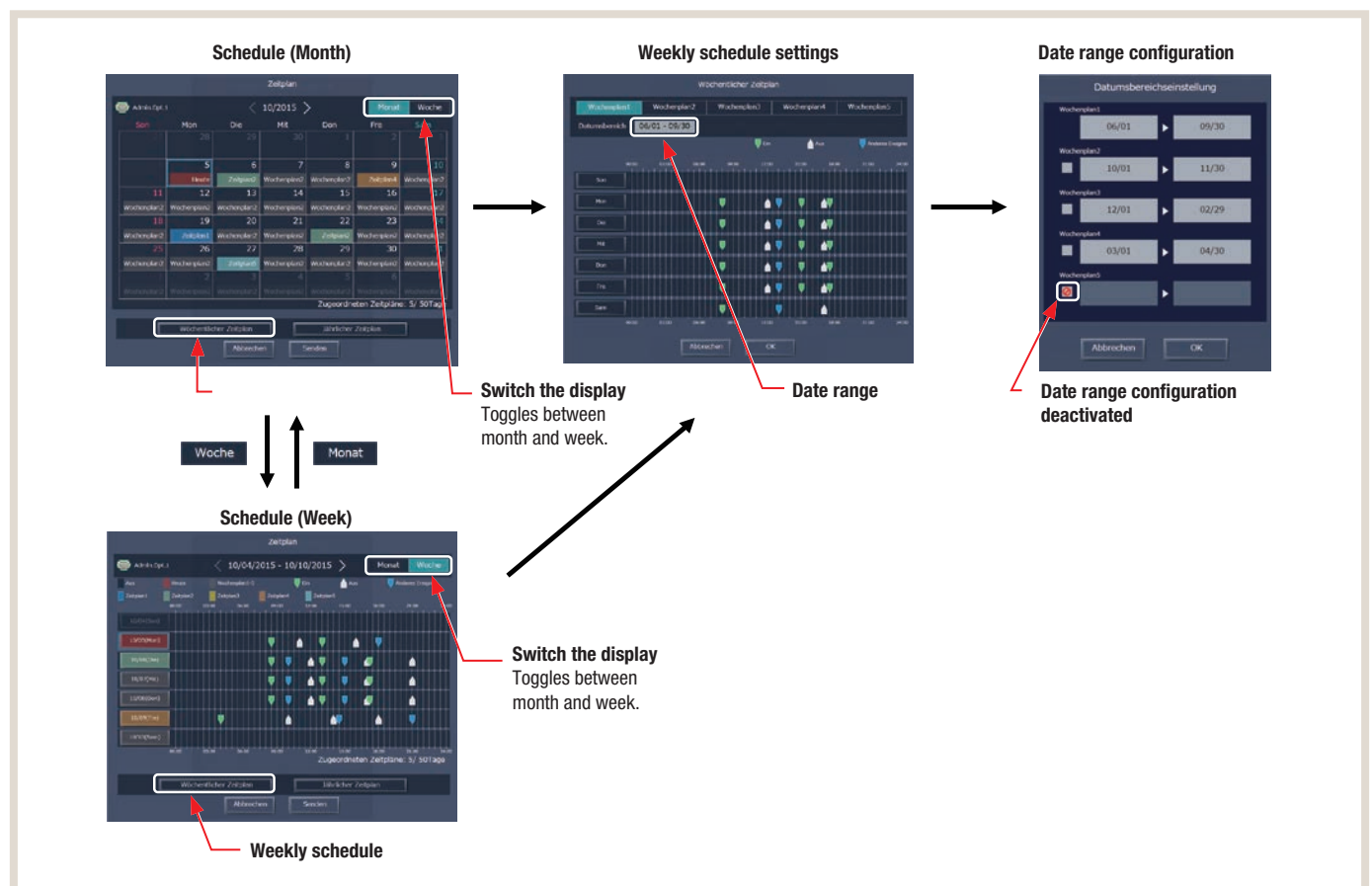
Five types of weekly schedule can be defined. (A year is divided into a maximum of five time periods.)

Note:

This setting corresponds to [Seasonal settings] on the LCD.

The date ranges for the weekly schedule are configured for each centralised controller (AE-200/EW-50). If the date ranges for the weekly schedule are configured with the Integrated Centralized Control Web, the same settings will be transferred to all centralised controllers that are subordinate to the Integrated Centralized Control Web.

1. On the [Schedule (monthly or weekly display)] screen, click [Weekly schedule].
2. On the [Weekly schedule] screen, click [Date range].
3. On the [Date range configuration] screen, enter the date ranges in which each weekly schedule (weekly schedule 1 to 5) shall apply.



Note:

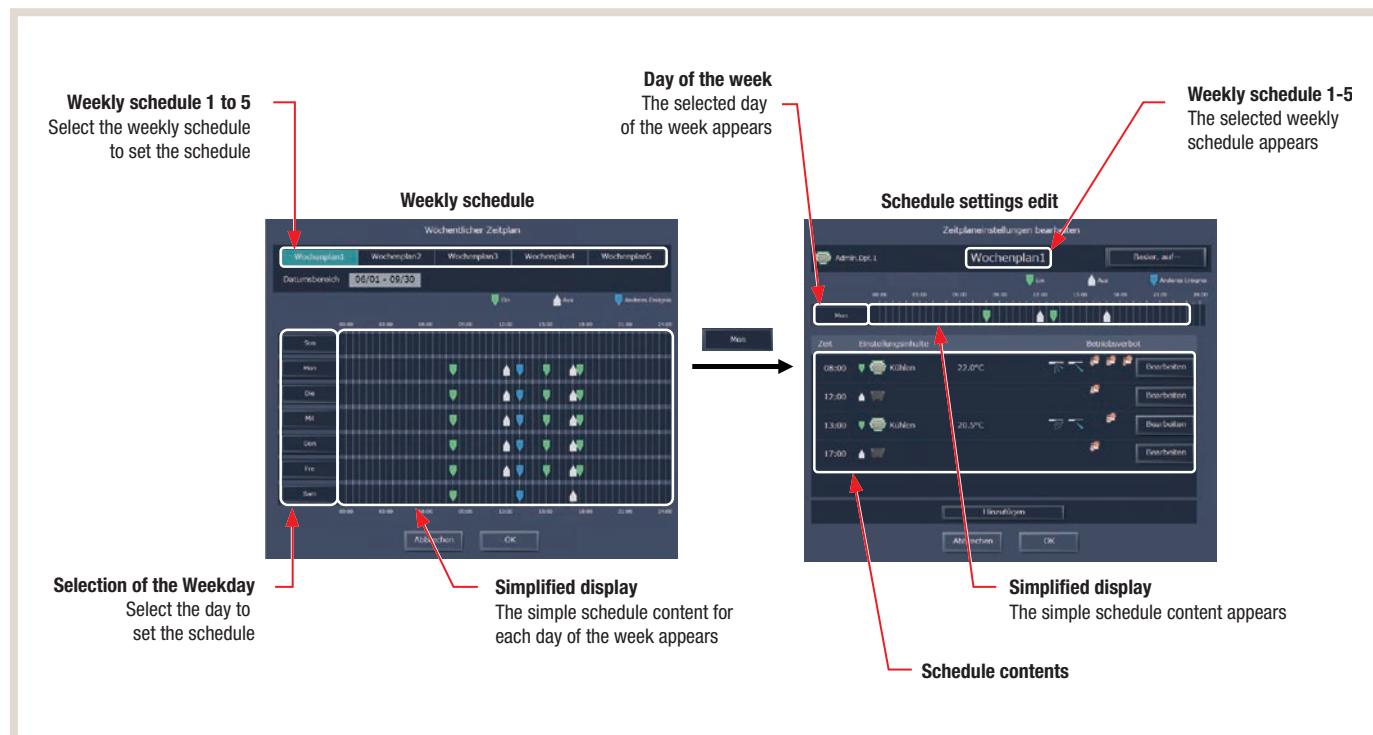
On the [Date range configuration] screen, click the checkbox to display the (☒) icon and thereby disable the date range configuration of the activated weekly schedule.

If [Schedule: Seasonal setting] is set to [Not available] in the initial settings, the date range settings cannot be used. With regard to the initial settings, please refer to the Initial settings section in the instruction manual.

4.2.3 Selecting a day of the week

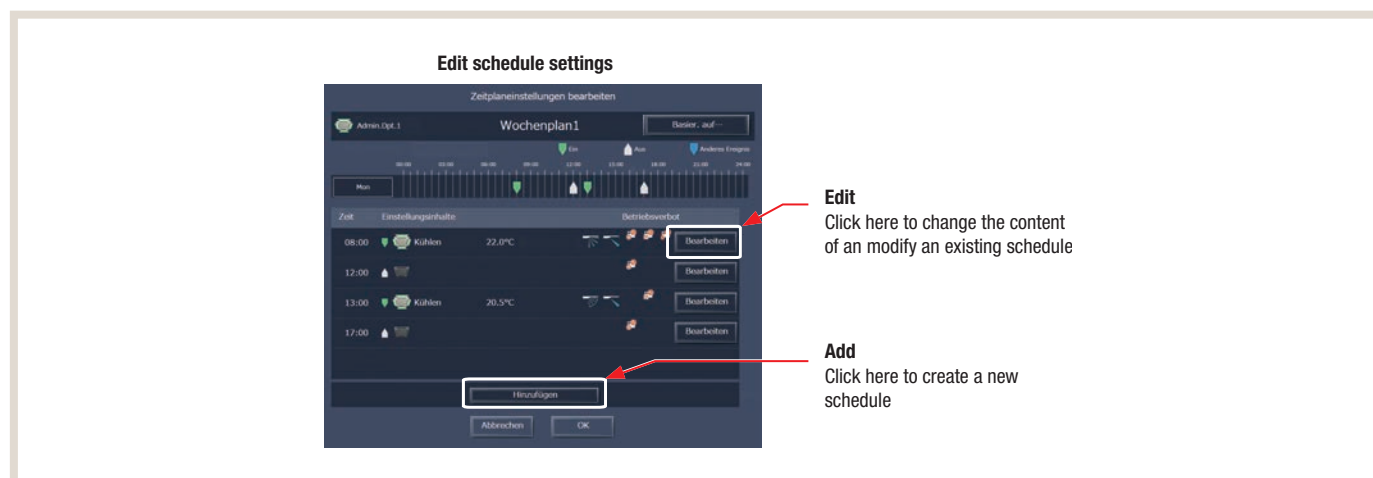
Schedules can be defined for each day of the week in each weekly schedule (weekly schedule 1 to 5).

1. Select one of the weekly schedules (weekly schedule 1 to 5) on the [Schedule] screen.
2. Click the day to define the schedule.
A screen for editing the selected weekly schedule and the selected day of the week will appear.

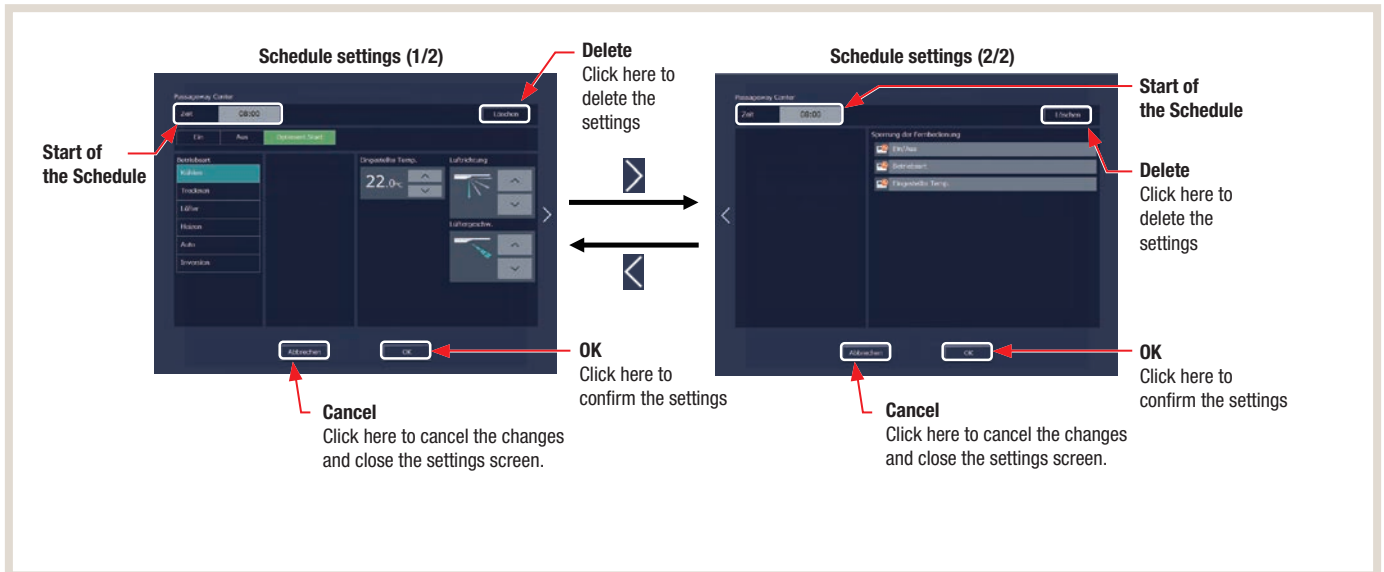


4.2.4 Creating or changing the schedule contents

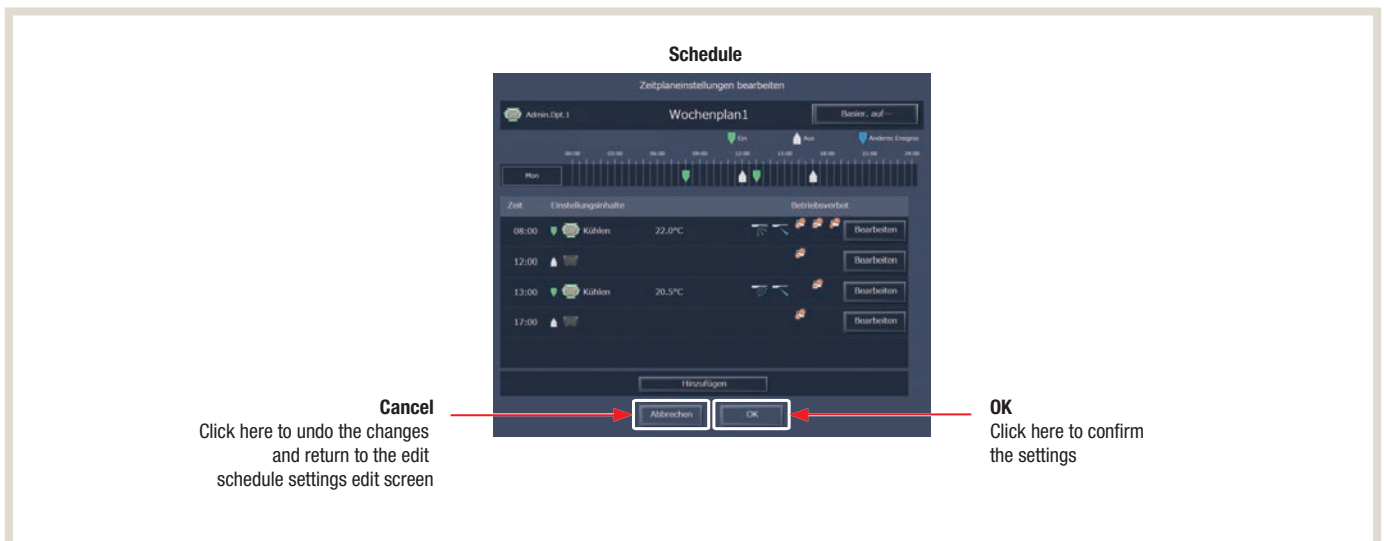
1. On the [Edit schedule settings] screen, click [Add] to create a new schedule or [Edit] to change an existing schedule.
A screen containing the schedule contents will appear.



2. On the screen containing the schedule contents, define the start time for the schedule, then define the scheduled operations and click [OK].
If [Optimised start] has been selected, the operating mode and the set temperature must also be defined.



3. Click [OK] on the [Edit schedule settings] screen once all schedule settings have been completed.



Notes:

If a schedule is collectively defined for a block or for all groups, then all operating modes of the respective model are available to select. However, the available operating modes are dependent on the unit model. The units cannot work in a selected operating mode that they do not support.

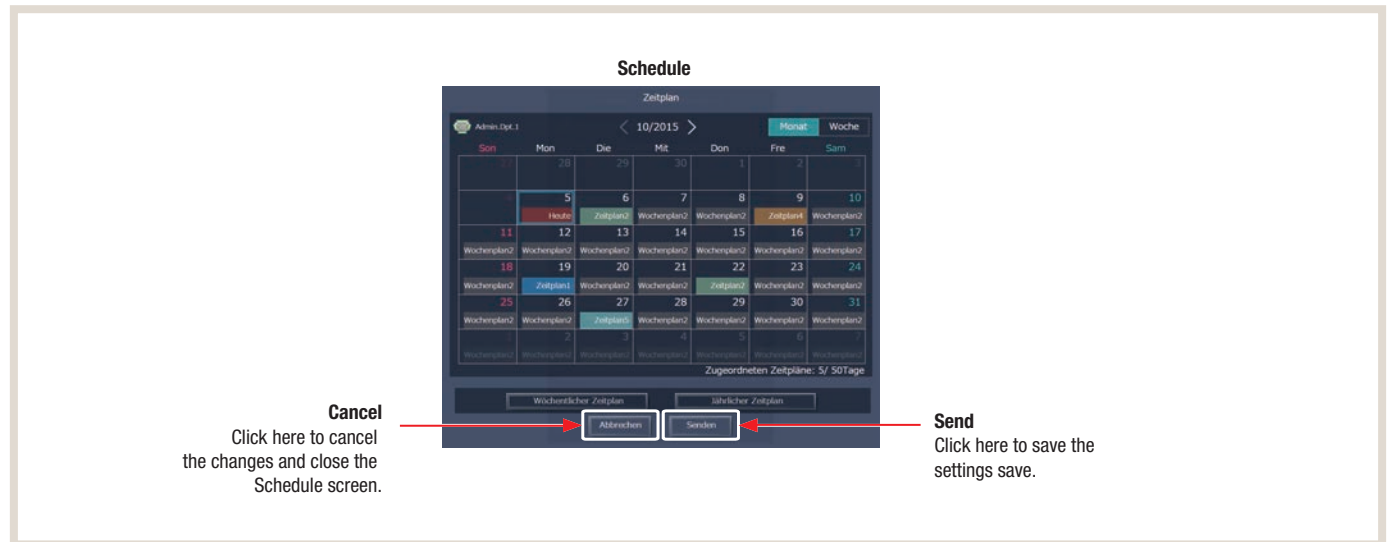
It is not necessary to define schedules for all operations. Define one or more required operations.

The entries for the scheduled operations vary according to the unit type.

4.2.5 Saving schedules

Once all schedule settings have been completed, click [Send] on the [Schedule] screen to transfer the settings to the centralised controllers and save these settings.

Click [Cancel] to undo the settings that have been entered.



Note:

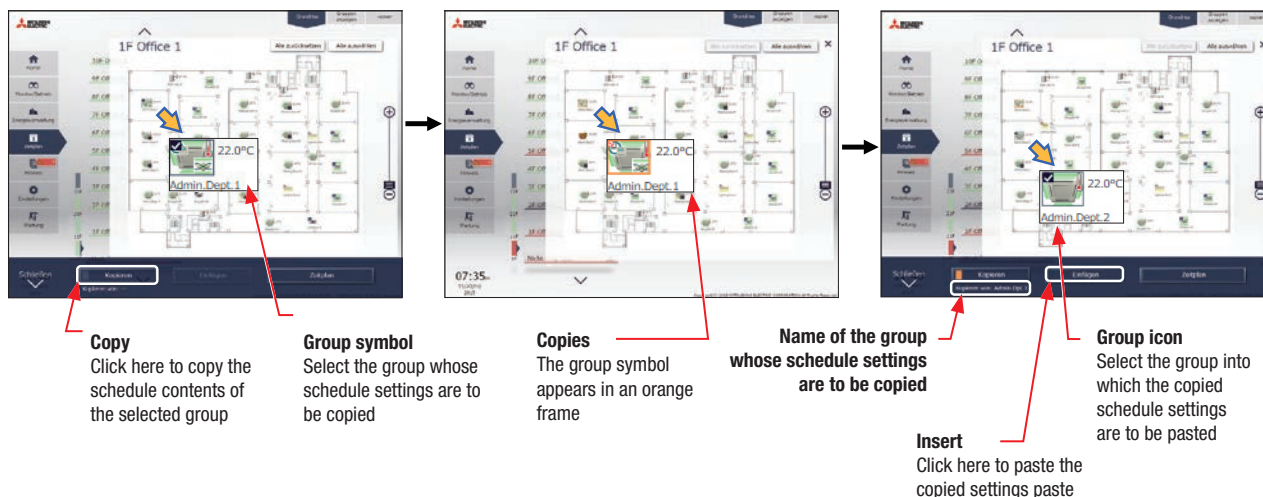
The schedule settings are transferred to the centralised controllers (AE-200/EW-50) by clicking [Send]. Depending on the scope of the schedule contents, this transfer may take several minutes.

4.2.6 Copying existing settings to a different group

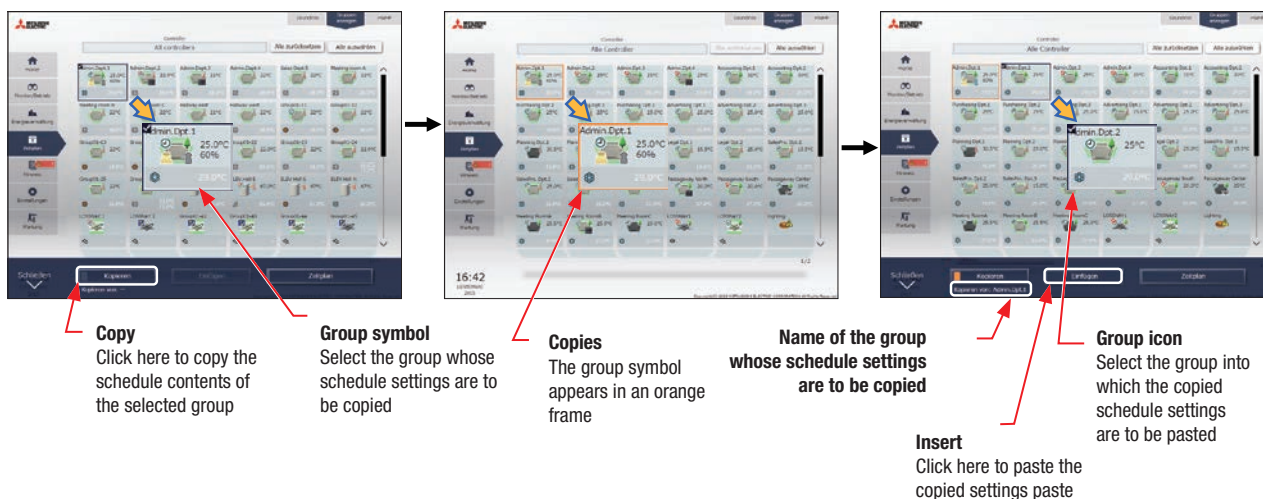
The schedule settings can be copied between groups.

1. On the [Floor plan] screen or in the group list, select the group whose schedule settings should be copied. Then click [Copy] in the task bar.
2. The schedule contents of the selected group are copied and the group icon is displayed with an orange frame.
3. Select the group into which the copied schedule settings should be pasted, then click [Paste].
4. The name of the group whose schedule settings were copied is displayed under [Copy].

[Floor plan]



[Group list]



Note:

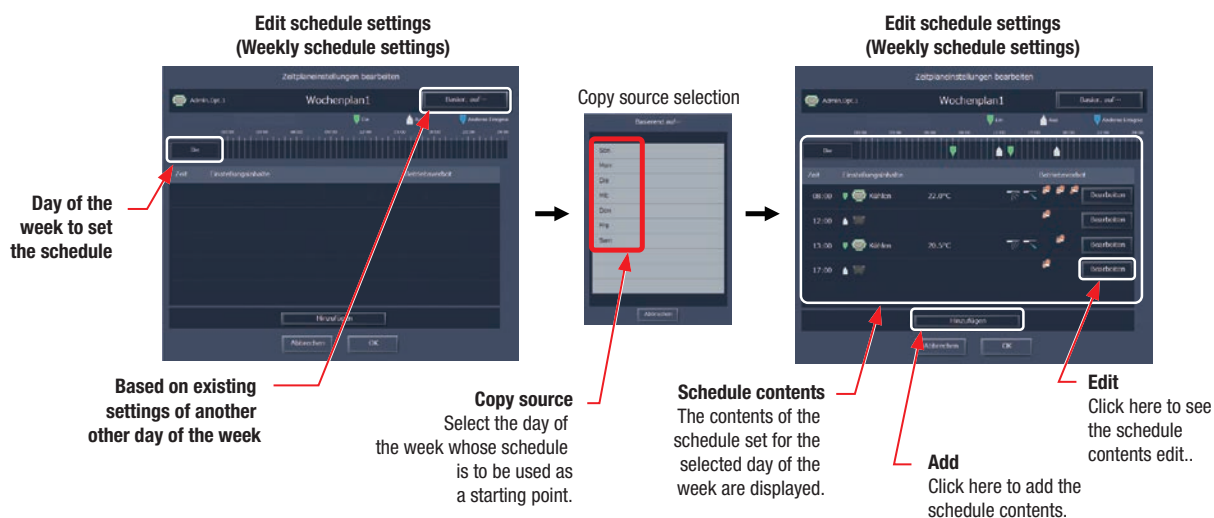
The schedules of a group might not be copied identically into a different group type. If a group with the set operating mode [Optimised start] is copied into the extract air temperature control unit, the [ON/OFF] operation setting will be set to [On].

4.2.7 Creating a schedule on the basis of existing settings for a different day of the week

When defining schedules for each day of the week in the weekly schedule, the schedule settings can be created on the basis of existing settings for a different day of the week.

1. On the [Edit schedule settings] screen, click [Based on...].
2. On the [Based on...] screen, select the template or the day of the week whose schedule should be used as the initial basis.
3. The schedule contents that have been defined for the selected template or day of the week will appear in the [Edit schedule settings] screen.
4. Schedule contents can be added or changed if necessary.

[Weekly schedule]

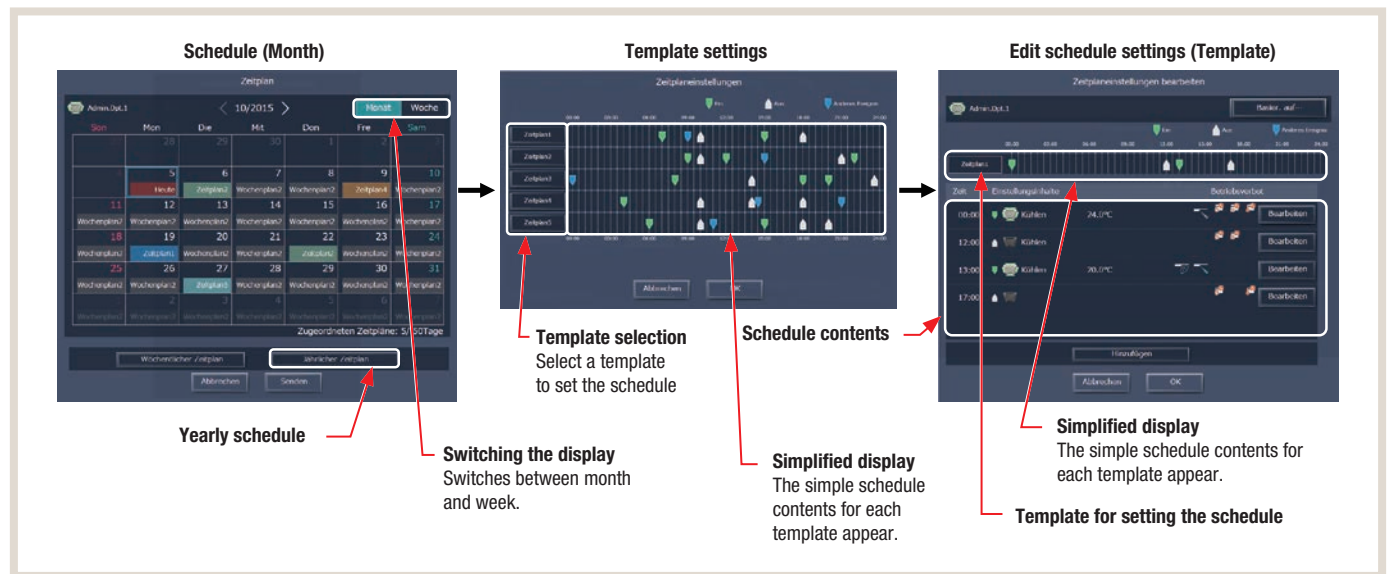


4.2.8 Using schedule templates

On the [Floor plan] screen or in the group list, select one or more group icons to which the schedule should be applied.

Up to five operating schedules can be defined.

1. On the [Schedule (monthly or weekly display)] screen, click [Yearly schedule].
2. On the [Schedule settings] screen, select a schedule template for defining the schedule.
3. A screen for editing the schedule settings will open.

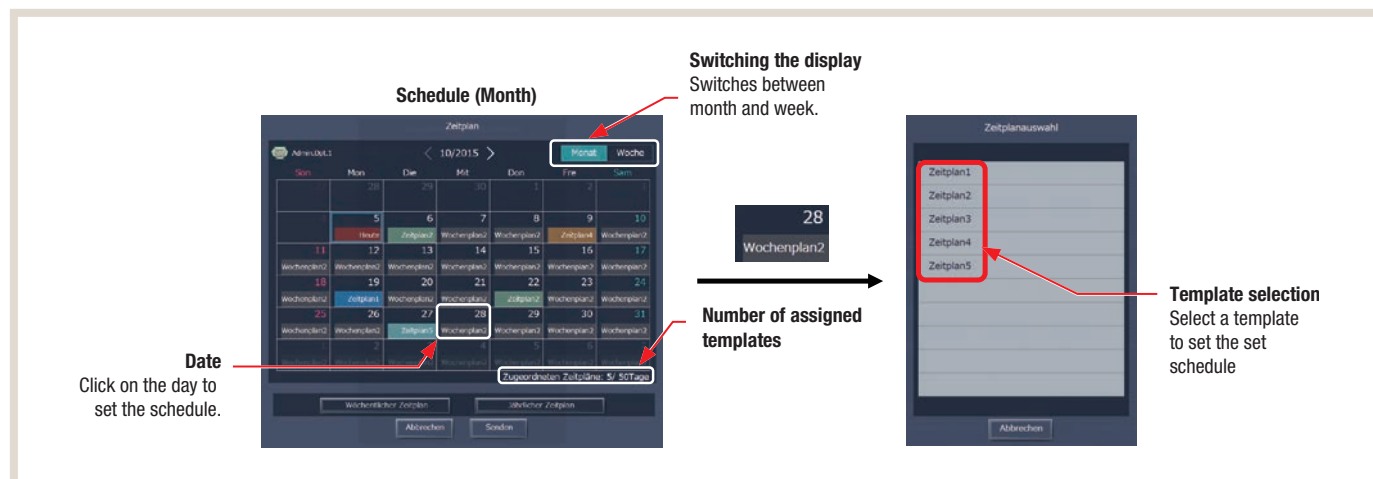


On the [Edit schedule settings] screen, define the start time for the schedule, then define the scheduled operations and click [OK].

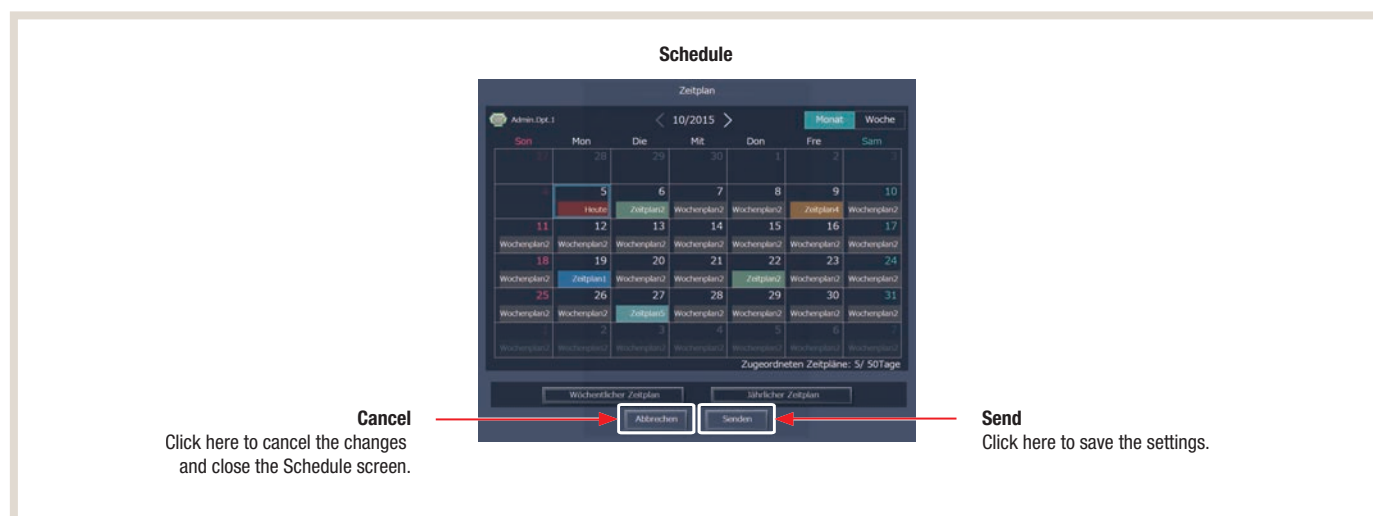
4.2.9 Assigning schedule templates to specific days

Each schedule template can be assigned to specific days such as public holidays and the summer break.

1. On the [Schedule (monthly or weekly display)] screen, click the date to which a template should be assigned.
2. Select the template that should be assigned to the selected date.



3. Once all schedule settings have been completed, click [Send] on the [Schedule] screen to transfer the settings to the centralised controllers and save these settings.
Click [Cancel] to undo the settings that have been entered.



Note:

The schedule settings are transferred to the centralised controllers (AE-200/EW-50) by clicking [Send]. Depending on the scope of the schedule contents, this transfer may take several minutes.

5. Personal Web

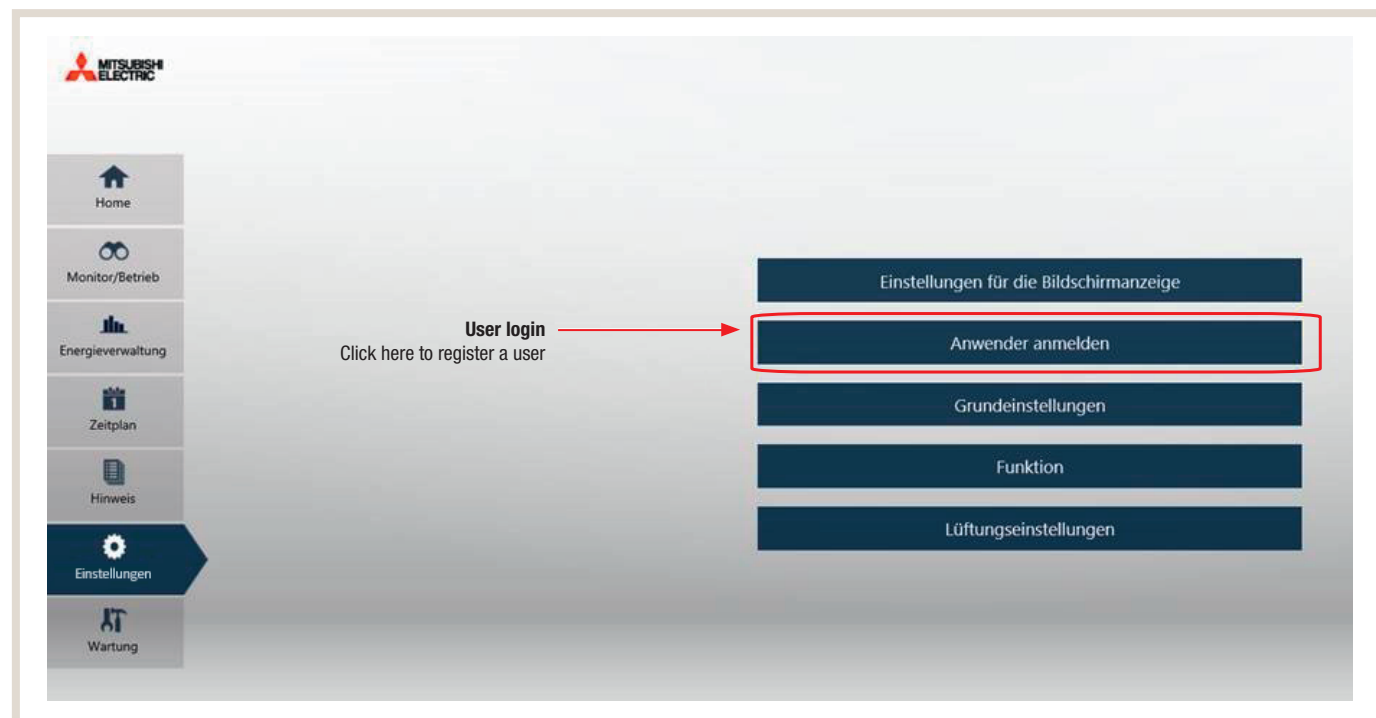
The Personal Web function enables each user to control their own air conditioning unit or their own air conditioning unit group.

The users of this function can be set up on the AE-200/EW-50 via the address **http://[IP address of the EW-50]/control**.

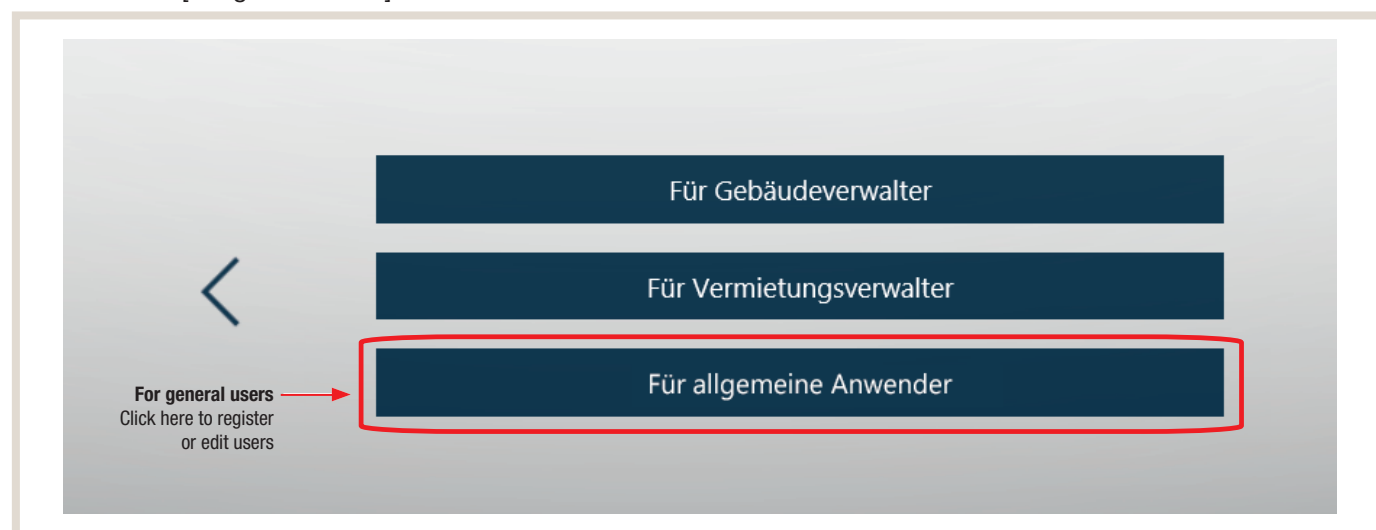
The login details are:

- User name: administrator
- Password: admin

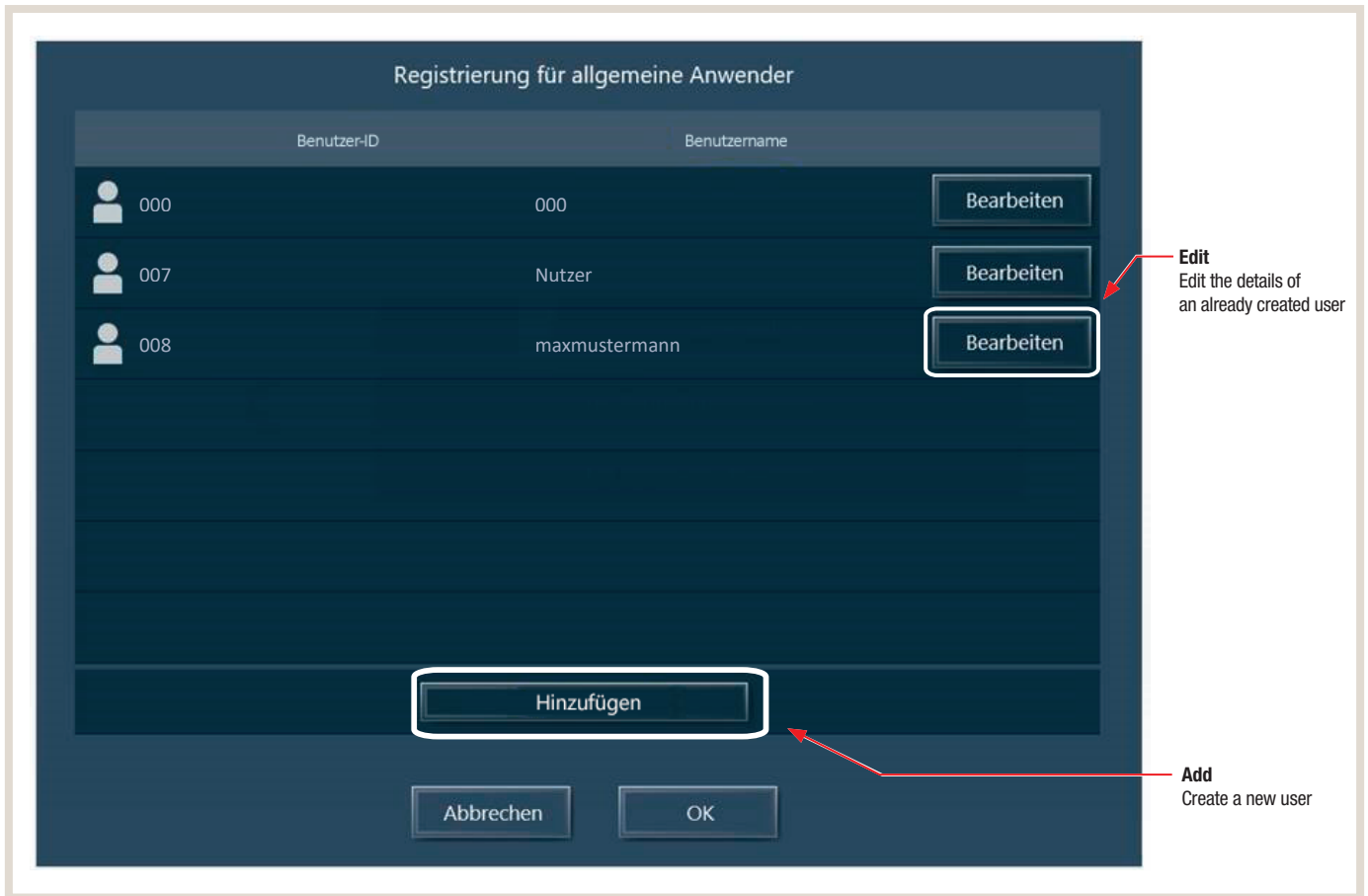
1. Click [User login] on the [Settings] screen.



2. Then click [For general users].



3. On the [Registration for general users] screen, click [Edit] to change the user ID and user name of a user. Click [Add] to create a new user.



4. Once you have clicked [Edit] or [Add], the following screen will open. By selecting the checkboxes under [All controllers], you can select which unit groups the user may control via the virtual remote controller.

Registrierung für allgemeine Anwender

Benutzer-ID: 007

Benutzername: Nutzer

Kennwort: ●●●

Klimaanlage: 4

LOSSNAY: 0

Warmwasser-versorgung: 0

Andere Geräte: 0

Controller: Alle Controller

☒ D2.030_Teeküche

☐ D2.010_Kombibüro

☐ Magistrale 02.44

☐ Gruppe01-4

☐ D2.020_Kombibüro

☐ Gruppe01-6

☐ D2.040_Kombibüro

☐ B2.150_Großraumbüro

☐ Gruppe01-9

☐ B2.150_Einzelgeraet

1/5

Abbrechen OK

Löschen

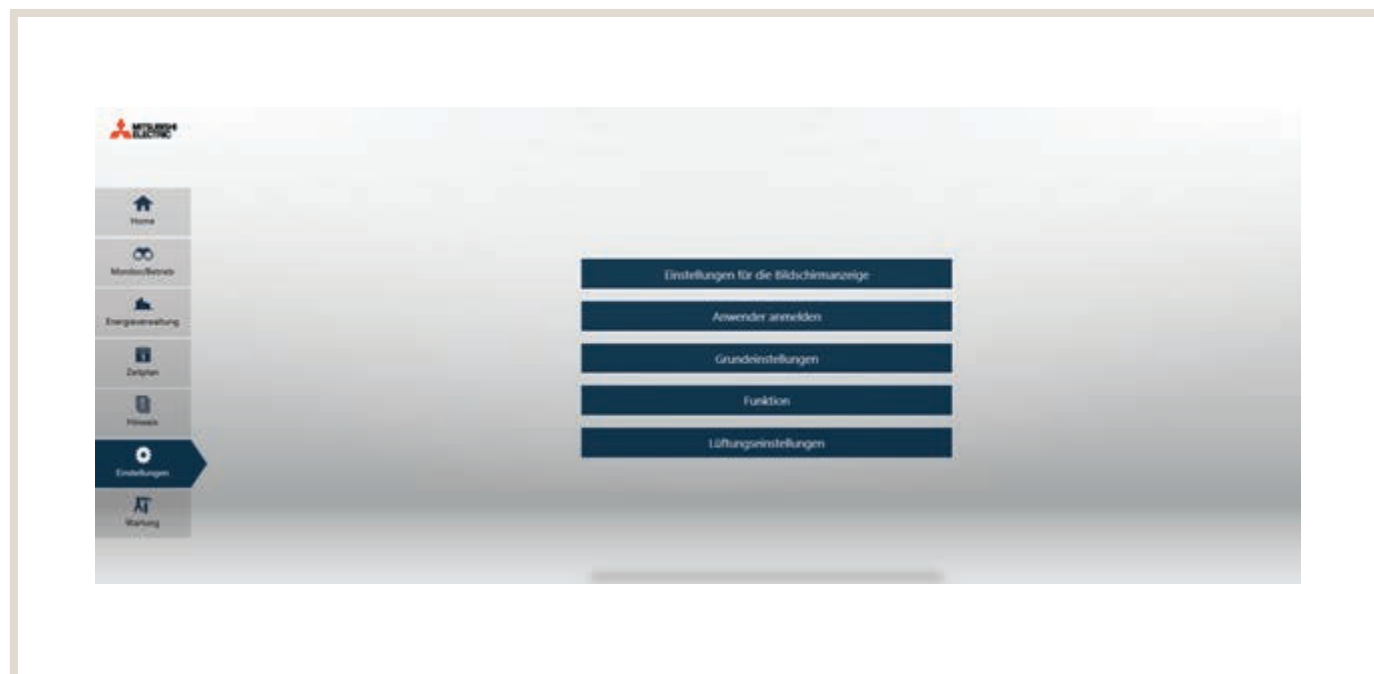
Check the box to select the device group

After the general user has logged in, the user receives an overview of the unit groups via the link [http://\[IP address of the EW-50\]/control](http://[IP address of the EW-50]/control). Only the unit types previously defined by the user are displayed in this view.



6. Settings

In the menu, click [Settings] to configure the settings for the screen display, user registration and other initial settings.



Setting		Description
[Screen display configuration]	[Info display on start screen]	Define whether [Info] items should be displayed on the start screen.
	[Energy display on start screen]	Define whether [Energy consumption status] should be displayed on the start screen.
	[Display order for block / group / address]	Define whether the unit groups should be displayed on the screen in order of their number or name.
	[Error message]	Enable or disable the error notification function.
	[Start screen]	Select the [Home] or [Monitor/Operation] screen that should be displayed as the start screen.
[User login]	[Building manager]	Define the user ID and password of the building manager.
	[Tenant officers]	Define user IDs, passwords and management units for tenant officers.
	[General users]	Define user IDs, passwords and management units for general users.
[Initial settings]	[Date and time configuration]	Configure the date and time.
	[Licence registration]	Register licences to activate additional functions.
[Configure functions]	[Email]	Configure the settings for email dispatch.
	[Peak load restriction]	Configure the functions for restricting the peak load.
	[Temperature range limit configuration]	Define the configurable temperature range for the local remote controllers or the web browser.
	[Night mode switchover schedule]	Define the time period during which the outdoor units should be operated in a quieter mode.
	[Outside temperature control]	Define the impact that the outside temperature should have on the setpoint specification.
	[Inversion control (cool-down protection)]	Define the room temperatures that should be maintained (even when the indoor units are switched off).
[Ventilation settings]	[Ventilation mode (night-time venting setting)]	Define the settings governing when and how (in the case of colder outside temperatures) the rooms should be aired.

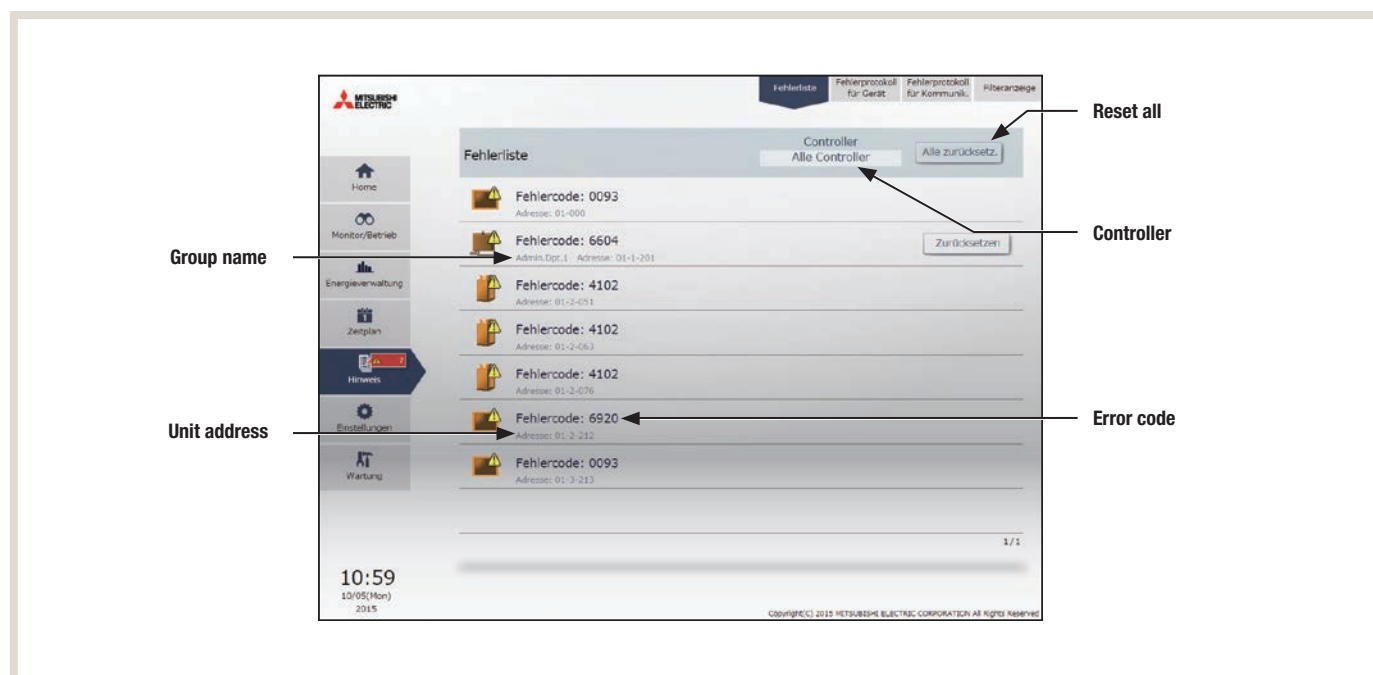
7. Error handling

Click [Info] in the menu, then click [Error list] to open the [Error list] screen.

An up-to-date list of units with errors will appear.

Note:

If an error occurs, check the address of the faulty unit, the error code and its corresponding definition. Then contact your dealer.

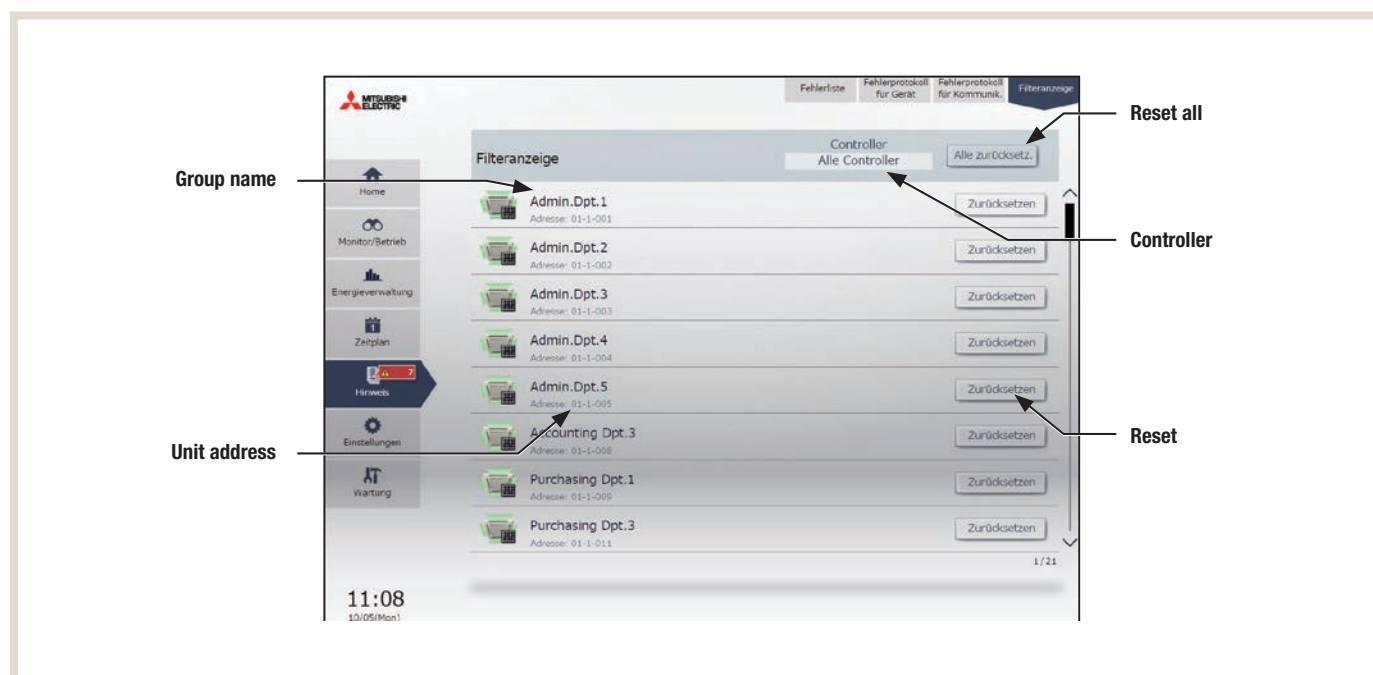


Menu item	Description
[Controller]	The display target units can be narrowed down by selecting a centralised controller.
[Group name]	The group name of the unit with an error is displayed. Note: This group name is not displayed if the unit with an error is an outdoor unit or a system controller.
[Unit address]	The number of the centralised controller and the address of the faulty unit are displayed.
[Error code]	The error code of the error is displayed. Click the error code to show its corresponding description. <div data-bbox="411 1444 965 1691"> <p>Fehlercode: 6604 Kommunikationsfehler - Keine Quittierung (06H) (Fehler Kommunikationsschaltkreis)</p> <p>OK</p> </div>
[Reset all]	Click here to reset all errors simultaneously. Note: The units whose errors are reset will stop. Note: Only errors on the centralised controller that is selected under [Controller] will be reset.

* Non-faulty units may stop during the error reset process.

For details relating to the AE-200, please refer to the Detailed operations section in the instruction manual.

A list of all units with an activated filter warning can be displayed.
Click [Info] in the menu, then click [Filter display] to open the [Filter display] screen.

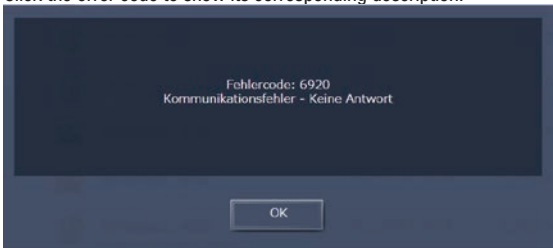


Menu item	Description
[Controller]	The display target unit groups can be narrowed down by selecting a centralised controller.
[Group name]	The name which appears is that of the group containing the unit whose filter display is activated.
[Unit address]	The number which appears is that of the centralised controller whose filter display is activated.
[Reset]	Click here to reset the filter display of the group containing the unit with the activated filter display. Note: Reset the filter display after cleaning the filter. Note: In the case of a unit whose filter display is not shown, the cumulative filter usage time can be deleted on the advanced settings screen. Information on this topic can be found in the Integrated Centralized Control Web manual for the AE-200/EW-50.
[Reset all]	Click here to simultaneously reset all filter displays of the centralised controller selected under [Controller]. Note: Reset the filter display after cleaning the filter. Note: After resetting the filter displays, it can take up to an hour until the filter displays on the local remote controllers are deleted. If the filter displays are reset from the local remote controllers, it will take up to an hour until the filter display on this screen is deleted.

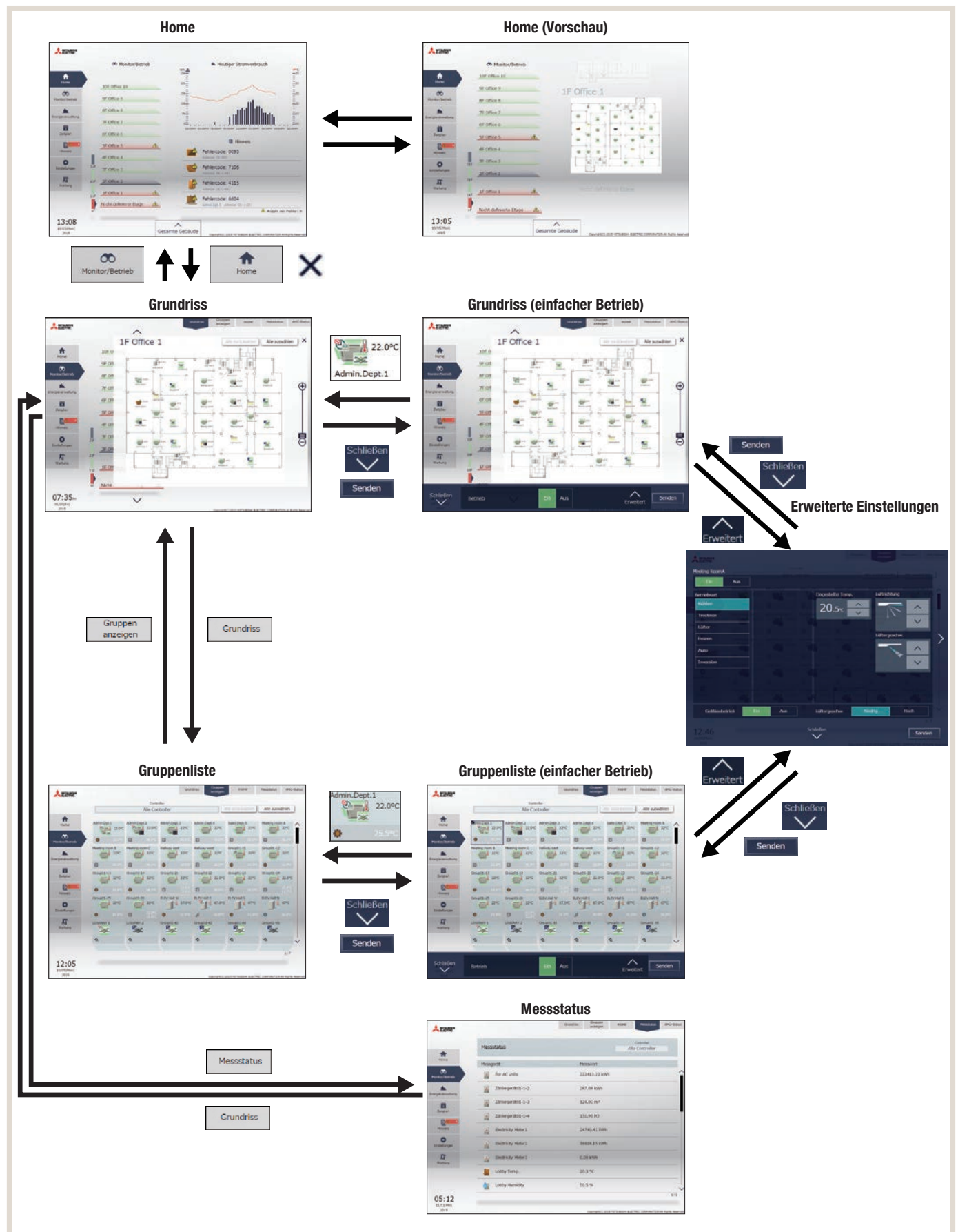
Click [Info] in the menu, then click [Error report for unit] to open the [Error report for unit] screen.

Note: The last 64 unit errors of each AE-200/EW-50 are displayed.

Note: Unit errors of all AE-200/EW-50 controllers are displayed in a list.

Menu item	Description
[Controller]	The display target error report can be narrowed down by selecting a centralised controller.
[Date and time at which error occurred]	The date and time at which the error occurred is displayed.
[Date and time of error resolution]	The date and time at which the error was resolved is displayed.
[Error code]	<p>The error code of the error is displayed. Click the error code to show its corresponding description.</p> 
[Unit address of error source]	The number of the centralised controller and the address of the faulty unit are displayed.
[Unit address of error message]	The address of the unit that reported the error is displayed.
[Delete report]	Click here to delete the displayed unit error report of the centralised controller selected under [Controller] [Controller].

8. Web browser navigation overview



Mitsubishi Electric

On-site for you

Headquarters

Living Environment Systems
Mitsubishi-Electric-Platz 1
D-40882 Ratingen
Phone +49 2102 486-0
Fax +49 2102 486-1120

Bremen

PLZ 26–28, 49
Borsteler Bogen 27 D
D-22453 Hamburg
Phone +49 40 55620347-0
Fax +49 40 55620347-99
les-bremen@meg.mee.com

Dortmund

PLZ 41, 44, 57–59
Mitsubishi-Electric-Platz 1
D-40882 Ratingen
Phone +49 2102 486-8521
Fax +49 2102 486-4664
les-dortmund@meg.mee.com

Kaiserslautern

PLZ 54, 66–69
Seligenstädter Grund 1
D-63150 Heusenstamm
Phone +49 6104 80243-0
Fax +49 6104 80243-29
les-kaiserslautern@meg.mee.com

Munich

PLZ 80–88
Schelmenwasenstraße 16 – 20
D-70567 Stuttgart
Phone +49 711 327001-610
Fax +49 711 327001-615
les-muenchen@meg.mee.com

Key Account

PLZ 01–99
Mitsubishi-Electric-Platz 1
D-40882 Ratingen
Phone +49 2102 486-4176
Fax +49 2102 486-4664
les-keyaccount@meg.mee.com

Berlin

PLZ 10–18, 39
Hauptstraße 80
D-16348 Wandlitz (Schönwalde)
Phone +49 40 55620347-0
Fax +49 40 55620347-99
les-berlin@meg.mee.com

Cologne

PLZ 42, 50–53
Mitsubishi-Electric-Platz 1
D-40882 Ratingen
Phone +49 2102 486-8521
Fax +49 2102 486-4664
les-koeln@meg.mee.com

Stuttgart

PLZ 70–74, 89
Schelmenwasenstraße 16 – 20
D-70567 Stuttgart
Phone +49 711 327001-610
Fax +49 711 327001-615
les-stuttgart@meg.mee.com

Hamburg

PLZ 19–25
Borsteler Bogen 27 D
D-22453 Hamburg
Phone +49 40 55620347-0
Fax +49 40 55620347-99
les-hamburg@meg.mee.com

Dresden

PLZ 01–09, 98–99
Borsteler Bogen 27 D
D-22453 Hamburg
Phone +49 40 55620347-0
Fax +49 2102 486-8616
les-dresden@meg.mee.com

Frankfurt

PLZ 35, 36, 55, 56, 60–65
Seligenstädter Grund 1
D-63150 Heusenstamm
Phone +49 6104 80243-0
Fax +49 6104 80243-29
les-frankfurt@meg.mee.com

Baden-Baden

PLZ 75–79
Schelmenwasenstraße 16 – 20
D-70567 Stuttgart
Phone +49 711 327001-610
Fax +49 711 327001-615
les-badenbaden@meg.mee.com

Hanover

PLZ 29–31, 38
Borsteler Bogen 27 D
D-22453 Hamburg
Phone +49 40 55620347-0
Fax +49 40 55620347-99
les-hannover@meg.mee.com

Düsseldorf

PLZ 40, 45–48
Mitsubishi-Electric-Platz 1
D-40882 Ratingen
Phone +49 2102 486-8521
Fax +49 2102 486-4664
les-duesseldorf@meg.mee.com

Kassel

PLZ 32–34, 37
Mitsubishi-Electric-Platz 1
D-40882 Ratingen
Phone +49 2102 486-8521
Fax +49 2102 486-4664
les-kassel@meg.mee.com

Nuremberg

PLZ 90–97
Schelmenwasenstraße 16 – 20
D-70567 Stuttgart
Phone +49 711 327001-610
Fax +49 711 327001-615
les-nuernberg@meg.mee.com

Our technical hotline is ready to take your call.

Mon. – Thu. 08:00 – 17:00
Fri. 08:00 – 16:00

Refrigeration/air conditioning

Phone +49 2102 1244-975
service.klima@meg.mee.com

Heating

Phone +49 2102 1244-655
service.ecodan@meg.mee.com



FSC
www.fsc.org

MIX

Paper from
responsible sources
Papier aus ver-
antwortungsvollen
Quellen

FSC® C010193

Notes:

In addition to observing all laws and regulations, the customer shall follow all information and documents provided by Mitsubishi Electric (e.g. manuals).
The customer (1) is responsible for passing on all information to their customer (2), including any additional downstream customers.

Our air conditioning systems, chillers and heat pumps contain fluorinated greenhouse gases R410A, R513A, R134a, R32, R1234ze and R454B.
For more information, please refer to the relevant operation manuals.

No liability is assumed for the correctness of the information and illustrations provided. Not all products are available in all countries.

